

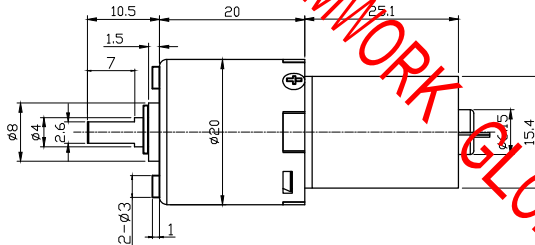
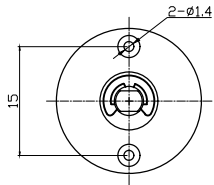
样品确认书

SAMPLE CONFIRMATION

Page 页码: 1/2

Model	OD-20P130-157-1280	Rated Voltage	12V	NO.	XG-2015102001	Date:	2015. 10. 28
-------	--------------------	---------------	-----	-----	---------------	-------	--------------

外形图 Dimension



1. Standard Operating Conditions 正常使用条件

- | | |
|--|--|
| 1.1 Operating Voltage:
电压使用范围: | DC 6~13V (constant between motor terminals)
(马达接线端子之稳定电压) |
| 1.2 Operating Condition Temperature Range :
使用环境温度范围: | -10~+60° C |
| 1.3 Direction of Rotation:
旋转方向 | CW or CCW |
| Positive pole connect Red "+"
Negative pole connect "-"
Facing the output shaft axis | 电源正极接红点"+"端子.
负极接 "-" 端子
面对轴伸端看输出轴应顺时针旋转CW |

2. Measuring Conditions 测量条件

- | | |
|---|---|
| 2.1 Rated Voltage:
额定电压: | DC 12V |
| 2.2 Environment Temperature:
测试环境温度: | 26° C |
| 2.3 Environment Humidity:
测试环境湿度: | 46% |
| 2.4 Position of Motor:
设置方向: | The tested sample is set level
电机出力轴水平放置 |

3. Electrical characteristics (Test after running 30 seconds) 电器特性 (电机通电30秒后测试)

Mapper 制作	Assessor 审核	Approved 核准
--------------	----------------	----------------

样品确认书

SAMPLE CONFIRMATION

Page 页码: 2/2

Model	OD-20P130-157-1280	Rated Voltage	12V	NO.	XG-2015102001	Edition	A/0
-------	--------------------	---------------	-----	-----	---------------	---------	-----

- | | |
|------------------------------------|---------------------|
| 3.1 No-load:
空载特性: | |
| 3.1.1 No-load speed:
无负载转速: | 76±10%rpm |
| 3.1.2 No-load current:
无负载电流: | 0.185A (0.370A max) |
| 3.2 Rated-load:
负载特性: | |
| 3.2.1 Rated-load torque:
负载转矩: | 1.2kg. cm |
| 3.2.2 Rated-load current:
负载电流: | 0.312A (0.468A max) |
| 3.2.3 Rated-load Speed:
负载转速: | 63.2±10%rpm |
| 3.2.4 Stall current:
堵转电流: | 1.1A |
| 3.2.5 Stall torque:
堵转力矩: | 5.7kg. cm (参考值) |

4. Mechanical characteristics 机械特性

- | | |
|---|--------|
| 4.1 Configuration: As specified in outline drawing
外观: 依图示规格 | |
| 4.2 Axial play of shaft
轴向间隙: | ≤0.5mm |
| 4.3 Weight:
重量: | |

- | | |
|---|--|
| 4.4 Mechanical Noise: To be set up with mutual consent
机械噪音: 设定双方均能接受之标准 | |
| 4.5 Mechanical Vibration: To be set up with mutual consent
机械震动: 设定双方均能接受之标准 | |

5. Motor features 电机特性

- | | |
|-------------------------------|--------------|
| 5.1 No-load Current:
空载电流: | 0.100A |
| 5.2 No-load Speed:
空载转速: | 13200±10%rpm |

6. Life test 寿命试验

- | | |
|--|------------------------|
| Test conditions 测试条件 | |
| 6.1 Rated load:
额定负载: | |
| 6.2 Environment: (Nomal circumstances)
环境: (常规情况) | 21° C ±5° C/ 65%±20%RH |
| 6.3 Test mode: A. Rated-load continuous operation
试验模式: A. 额定负载连续运转 | |
| B. Running 5s stop 5s
B. 运行5秒停5秒 | |

Client confirms :
客户确认